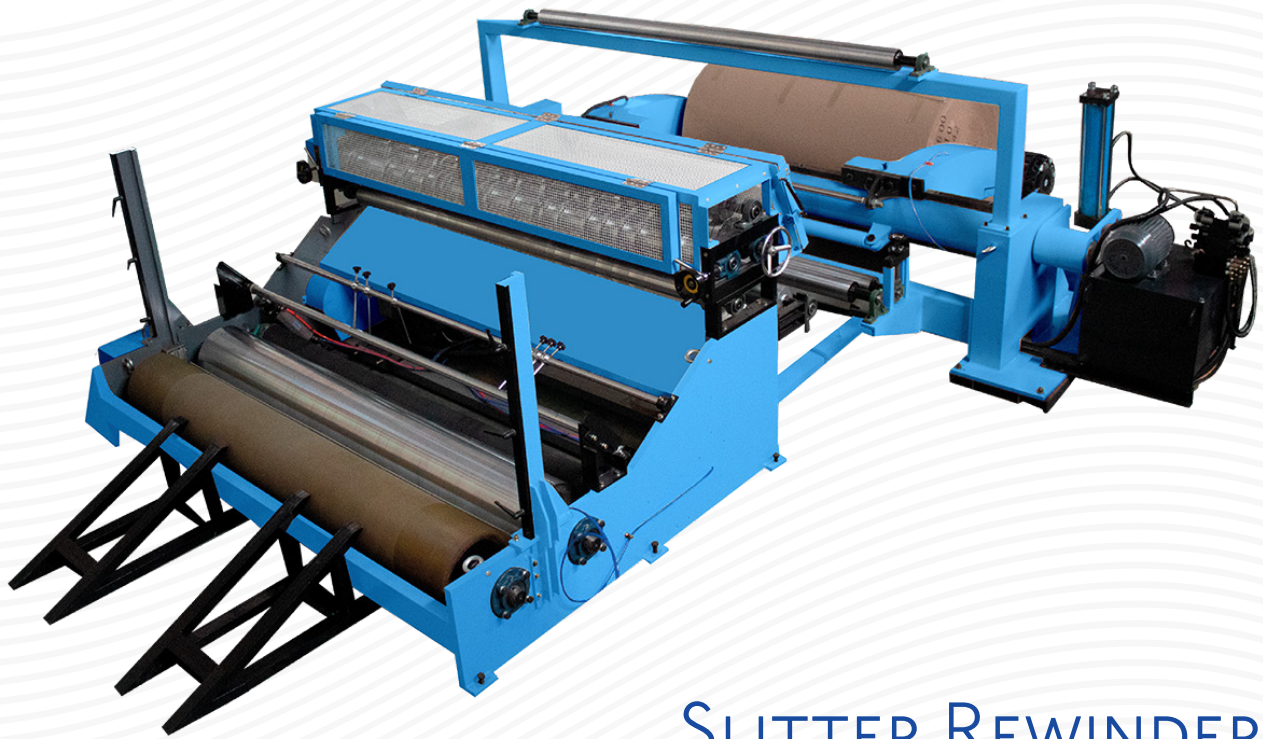


AMC



SLITTER REWINDER
Model ZFQ

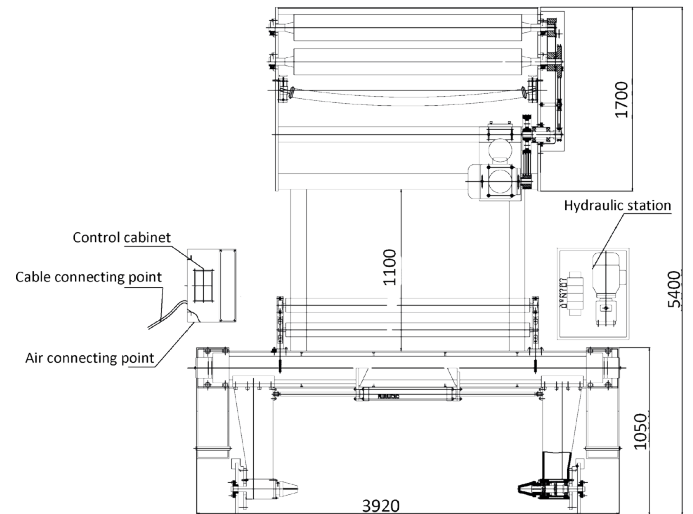
DESCRIPTION

The Paper Slitter Rewinder ZFQ, is widely used to cut papers in the packaging industry, is manufactured stringently under standard quality parameters, using high grade materials.

Its robust design makes it capable of withstanding adverse conditions, highly appreciate for its easy operation and low maintenance cost, overall design of the machine with high efficiency, high precision and high reliability.

The compact ZFQ, high-performance Paper Slitter Rewinder provides an ideal base to enter the slitting and rewinding industry.

High efficiency, precision and reliability.



APPLICATIONS

Paper Rolls



CHARACTERISTICS

- 1.- Hydraulic shaftless paper stand to load paper roll.
- 2.- Frequency converter drive the synchronous belt, strong power with low noise.
- 3.- Electric control hydraulic pressure correction, so high precision.
- 4.- Pneumatic tension control system.
- 5.- Single unit rewinding, low center of gravity, allow easy unloading paper roll after rewinding.
- 6.- Heavy duty slitting components, more slitting quality.
- 7.- Ensure the distance between two paper rolls with 1mm to 2 mm gap.
- 6.- Air cylinder to unload paper roll and reduce working intensity.
- 7.- Width could be customized.

SPECIFICATIONS

SLITTER REWINDER Model ZFQ			
Specifications	ZFQ-2000C	ZFQ-2000D	ZFQ-2500D
Working Speed	0-200m/min		
Max. Width of Jumbo Roll	2000 mm		2500 mm
Min. Width of Jumbo Roll	900 mm		1100 mm
Max. Diameter of Jumbo Roll	Φ 1500 mm	Φ 1800 mm	Φ 1800 mm
Max. Weight of Jumbo Roll	2000 Kg		2800 Kg
Paper Grammage	125gsm-600gsm (kraft paper) 80gsm-150gsm (office paper)		80gsm - 600gsm
Core Diameter	3" (76 mm) (Customizable)		
Rewind Paper Roll Width	Min. 40 mm		
Rewind Paper Roll Diameter	Max.1500 mm	Max.1500 mm (1800 mm if Customer Requires)	
Slitting Blades	20 Pcs		25 Pcs
Power Options	19 Kw, 380 V, 50 Hz/60 Hz, 38 A 19 Kw, 220 V, 50 Hz/60 Hz, 76 A 19 Kw, 440 V, 50 Hz/60 Hz, 38 A		
Dimensions	5100 x 4400 x 1600 mm		5600 x 4500 x 1600 mm
Weight	4770 kg	4970 kg	5500 kg
Floor Area	8000 x 5000 x 1600 mm		8500 x 5500 x 1600 mm
Paper Stand	Shaftless Type Hydraulic Stand		

MODULES

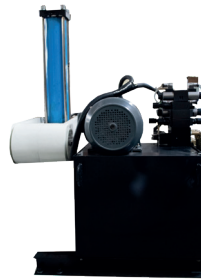
Paper Roll Stand

The Paper Roll Stand is used to hold large diameter paper rolls, the maximum load capacity can be up to 2000 Kg.



Hydraulic Station

The Hydraulic Station provides hydraulic pressure to the hydraulic cylinders; to move the arms of the Paper Roll Stand to the left, right, up, down, open and close.



Slitter and Rewinder Section

In this section, the paper is cut and rewinds, there are 20 cutting blades installed on the axes. The minimum cutting space is 40 mm.



Control Panel

The Control Panel is a cabinet, which contains the electrical components to control or monitor the machine.



📍 17901 Von Karman Ave. Suite 600
Irvine, CA, 92614

✉️ info@corrugatedboxequipment.com

🌐 www.corrugatedboxequipment.com

☎️ USA 949 242 9516 / 949 556 8744
MEX 55 7587 7681 / 55 8421 91591