



AMC MACHINERY



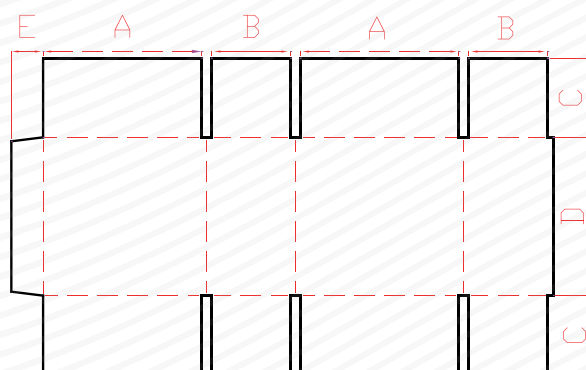
AUTOMATIC STITCHER

Model EAS-2600



DESCRIPTION

- AMC Automatic Stitcher EAS-2600 consist in two parts: Vacuum Feeding Unit and Folding Stitching Unit.
- Control cabinet is digital display.
- PLC control.
- Dual frequency converter running synchronously.
- Auto feeding, auto folding, auto stitching, auto counting, auto lateral output.
- Servo Motor Drive.
- Automatic Control.



Technical specifications	
Model	EAS-2600
Max. Sheet Width (A+B)x2	2600 mm
Min. Sheet Width (A+B)x2	800 mm
Max. Box Length (A)	800 mm
Min. Box Length (A)	230 mm
Max. Box Width (B)	500 mm
Min. Box Width (B)	170 mm
Max. Sheet Length (C+D+C)	1100 mm
Min. Sheet Length (C+D+C)	300 mm
Max. Cover Size (C)	400 mm
Min. Cover Size (C)	100 mm
Max. Box Height (D)	700 mm
Min. Box Height (D)	150 mm
Max. Box Flap Size	40 mm
Min. Box Flap Size	30 mm
Max. Stacking Height	1100 mm
No. of Stitches	1-99 Stitches
Interfacing Stitches Interval	30-120 mm
Stitching Speed	800 Stitches / min
Working Speed	40-70 Pcs / min
Power	11 Kw
Dimension	10000 x 3500 x 1700 mm
Machine Weight	5000 Kg



MODULES

Feeding Unit



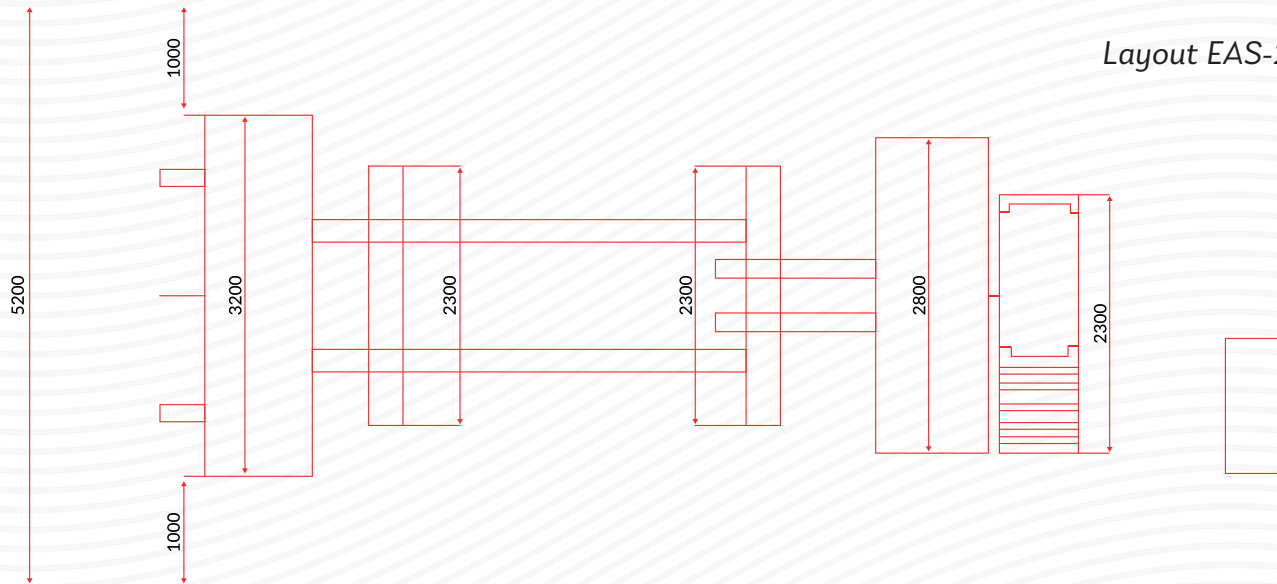
- Belt lead edge feeder
- Electromagnetic Clutch
- Creasing wheel gap adjustable
- Auto Counter

Folding Stitching Unit

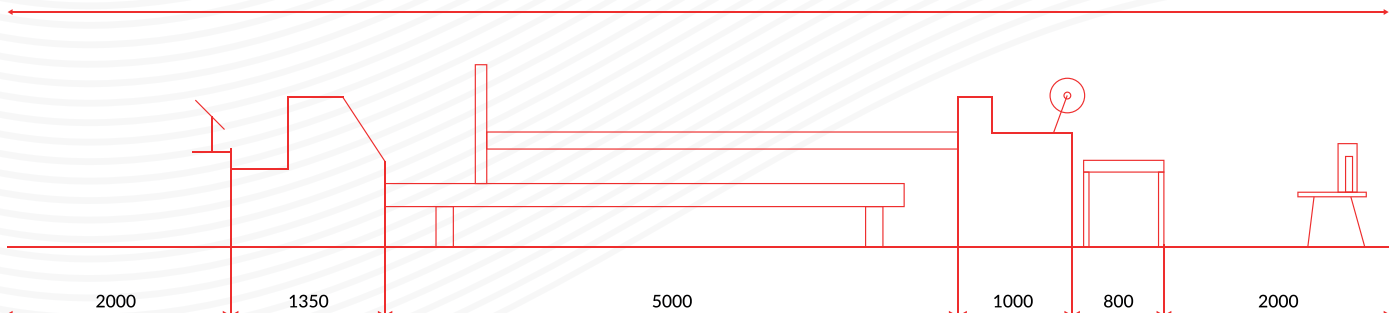


- Dual Servo Motor
- Touch Screen Operation
- Single and Double Wall Capability
- Single and Double Stitching

Layout EAS-2600



12150





AMC MACHINERY


BOX



 17901 Von Karman Ave. Suite 600
Irvine, CA, 92614

 info@corrugatedboxequipment.com

 www.corrugatedboxequipment.com

 USA 949 242 9516 / 949 556 8744
MEX 55 7587 7681 / 55 8421 91591